

**B**urke Plaza,  
Apartments, located at 67th  
and “L” Streets, is a 91-unit  
high-rise apartment build-  
ing designed for seniors and  
persons with disabilities.

A variety of educational, so-  
cial, recreational and support  
services, which promote in-  
dependent living and an ac-  
tive lifestyle, are available to  
residents of Burke Plaza.

Built in 1978, Burke Plaza is  
named in honor of Richard A.  
Burke, who served as Execu-  
tive Director of the Lincoln  
Housing Authority from 1971  
to 1987.



Burke Plaza is owned  
and managed by the



5700 “R” Street, Lincoln, Nebraska 68505

For more information, call the  
Burke Plaza Leasing Agent at  
(402) 434-5552  
TDD (402) 545-1833 ext 875

To schedule an appointment to tour  
Burke Plaza,  
call (402) 434-2618  
[www.L-Housing.com](http://www.L-Housing.com)



Offering  
Independent Living &  
Affordable Housing  
for Seniors

**Affordable**  
Convenient  
**Accessible**  
Secure



## Affordability

- Rent is based on income. Residents must meet income guidelines at the time of initial occupancy.
- All utilities except telephone and cable television are paid.

## Convenience

- Three different one-bedroom floor plans
- Electric range, frost-free refrigerator and individual thermostats in each apartment.
- Cable television hookups and a building antenna.
- Coin-operated laundry facilities.
- A community room with dining tables and a kitchen. Residents can reserve the community room for family gatherings and other special events.
- A recreational room with exercise equipment, billiards and shuffleboard.
- Plenty of free parking for residents and guests.
- Attractive landscaping.
- Computer room with Internet access and library.
- Indoor postal and newspaper delivery.
- Convenient access to

Churches

Restaurants

Grocery Stores

Pharmacy

Doctors

Dentists

Clothing and department stores in the nearby Westfield Shopping Center (Gateway)

- A bus stop is close by.
- St. Elizabeth Community Health Center is next door.
- Smoking is prohibited throughout the building

## Security

- A secure environment—a telephone-activated locked entry system allows residents to unlock the main lobby door from their apartments for guests.
- Each apartment is equipped with two emergency call switches monitored 24 hours a day to provide residents with emergency assistance when needed.

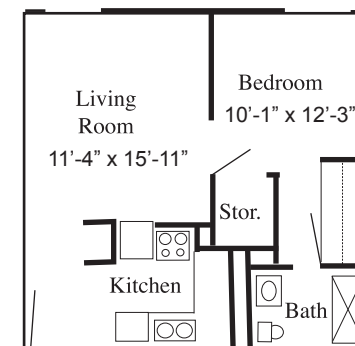
## Support

- Staff person provides resident services.
- On-site maintenance and repair worker.
- 24-hour-a-day emergency maintenance call service.
- 24-hour-a-day resident assistance program using resident volunteers and on-call staff.
- Through a cooperative agreement with the Lincoln Area Agency on Aging, case management, congregate meals, housekeeping, chore service and limited transportation is available at a moderate cost. *Individual must meet program eligibility guidelines to receive these special services.*
- Small pet permitted with payment of a pet deposit.

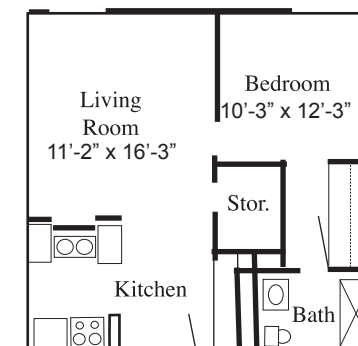
## Resident involvement

- An active Resident Council elected by residents to represent their interests and organize activities.
- Organized social activities such as bingo, movies, dinners, birthday and holiday celebrations.
- Group transportation for shopping and recreational outings.

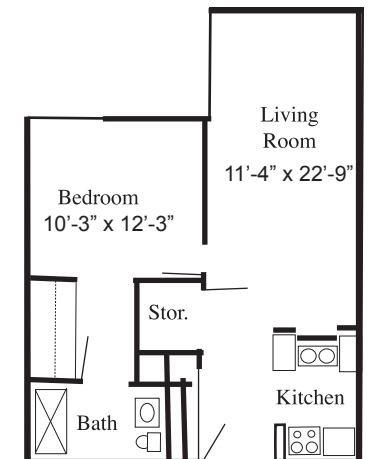
## Floor plans



Type 1 1-bedroom 531 sq. feet



Type 2 1-bedroom 531 sq. feet



Type 3 1-bedroom 603 sq. feet